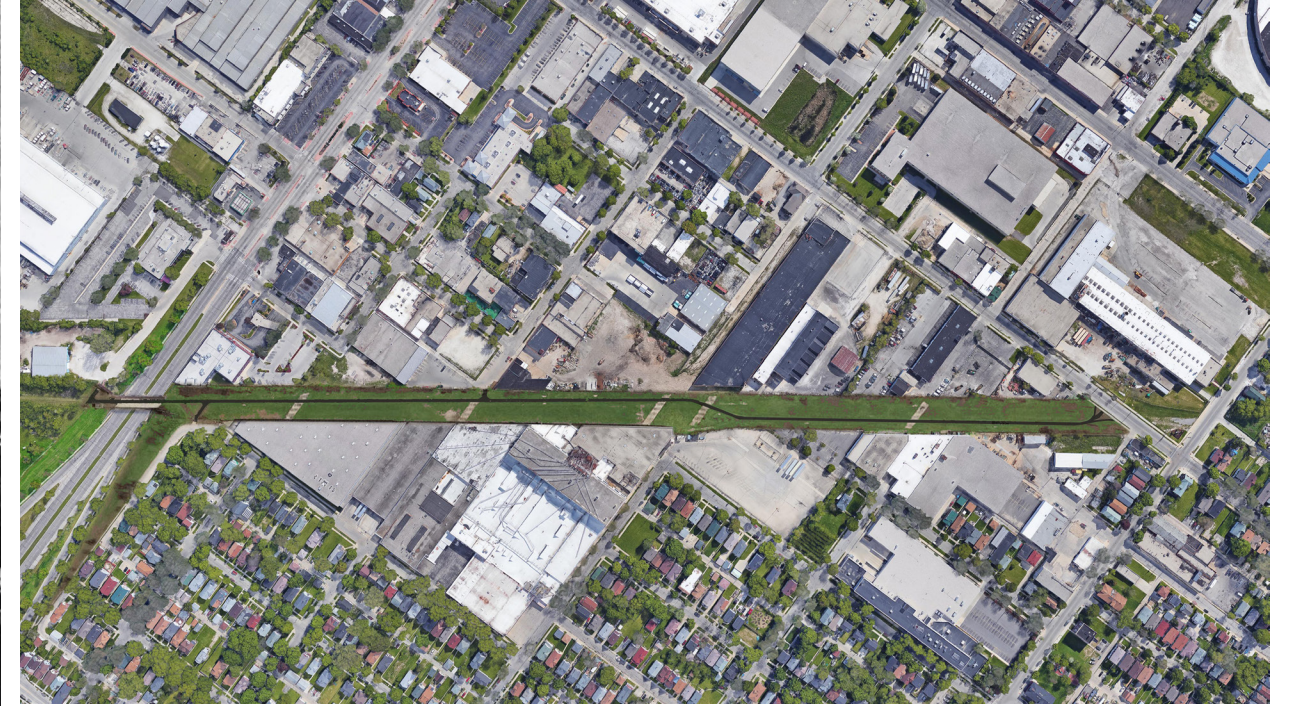


L I F E W A Y S P L A N

STRATEGIES FOR THE EVOLUTION OF THE BEERLINE TRAIL



The core premise of Lifeways Pan is that it presents a vision of hope for the future. The proposals in the Lifeways Plan focus on envisioning the possibilities, aiming to identify elements, programs, and improvements that could be transformative to the space.

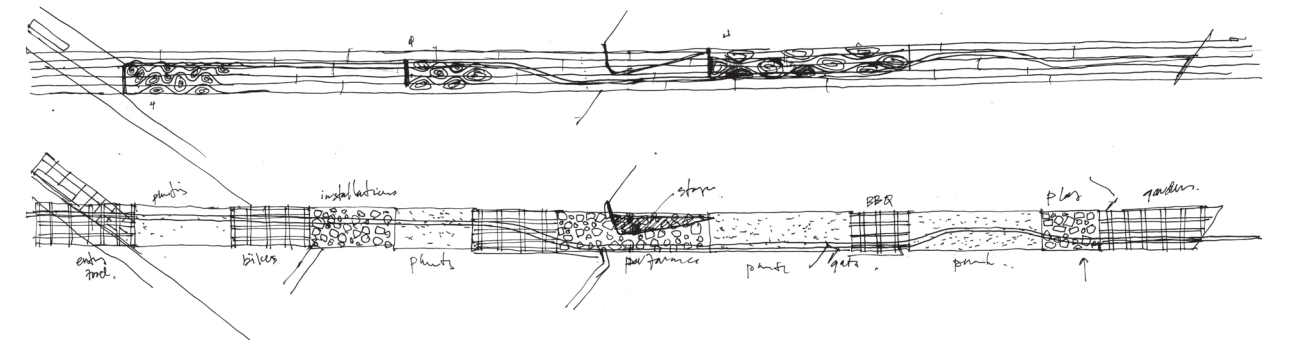
This concept for the new Beerline Trail at Harambee envisions a prioritization of recycled material as a portion of the design. We are exploring this concept understanding different degrees of recycled materials are possible for the public space and we may move forward with some of all of the plan without recycled materials. The phasing of the trail is inspired by the historic quilting art of African Americans and the role that improvisation plays in reshaping the old and familiar into something contemporary and unique. Artists are thus allowed to simultaneously express themselves while reinforcing the image of the community.

Changing the nomenclature from community design, it is possible to think more about the way of life in the community.

The spaces and places that people maintain, conserve, or preserve reinforce a particular way they want to live. Within the American diaspora, this “way of life” can be idiosyncratic, countercultural, or normative. A “way of life” is truly American, suggesting individual freedom and choice.

Reinforcing individualism and collective diversity, Lifeways Plan suggests a willingness to validate a diversity of norms and actions of inhabitants in an environment where people are constantly engaged in the process of acculturation and assimilation, as opposed to validating differences.

Urban design and planning projects often seek to organize, tidy, and homogenize environments through standards that can be easily understood by all. But if the focus is on lifeways, they encounter diversity and the multiplication of actions/ events toward similar environments, objects, and things. Everyday and mundane, commemorative and community... Lifeways together argues for “culture” to be central to design, recognizing that places and environments are maintained, sustained, or transformed by the people and bureaucracies that control them.



LIFEWAYS PLAN VISION for BEERLINE TRAIL PHASE 2

3 PRIORITY AREAS

- 248 TREES
- 0.6 MILES OF RECYCLED PAVING
- 9 GATES
- 8 TRAIL MARKERS
- 7 ACTIVITY PAVILIONS
- 1 BIKE SHED
- 1 GREENHOUSE



NORTH: CAPITOL BRIDGE YARDS

CENTRAL: VIENNA STAGE GATEWAY

SOUTH: CONNECTOR BUILDING PARK

- 0 existing asphalt path (preserved)
- 1 recycled paving (different types)
- 2 tree bosque
- 3 activity pavilions + beer garden shed
- 4 picnic / barbeque sites
- 5 greenhouse
- 6 eatable garden plots
- 7 street gate
- 8 trail + street markers
- 9 bike lane
- 10 bridge seating

- 0 existing asphalt path (preserved)
- 1 recycled paving (different types)
- 2 tree bosque
- 11 stage
- 12 barbecue areas
- 13 activity pavilions ("autonomous boxes")
- 14 Vienna connection west
- 15 Vienna connection east

- 0 existing asphalt path (preserved)
- 1 recycled paving (different types)
- 2 tree bosque
- 16 Harambee bikes shed
- 17 temporary classroom/tool shed
- 18 connector building
- 19 viewing tower
- 20 gate marker
- 21 street marker
- 22 trail gateway marker

LEGEND: curated elements

- street marker
- ⊙ Beerline Trail marker
- wayfinding signs (oversized)
- art mural
- temporary mural (banner)

